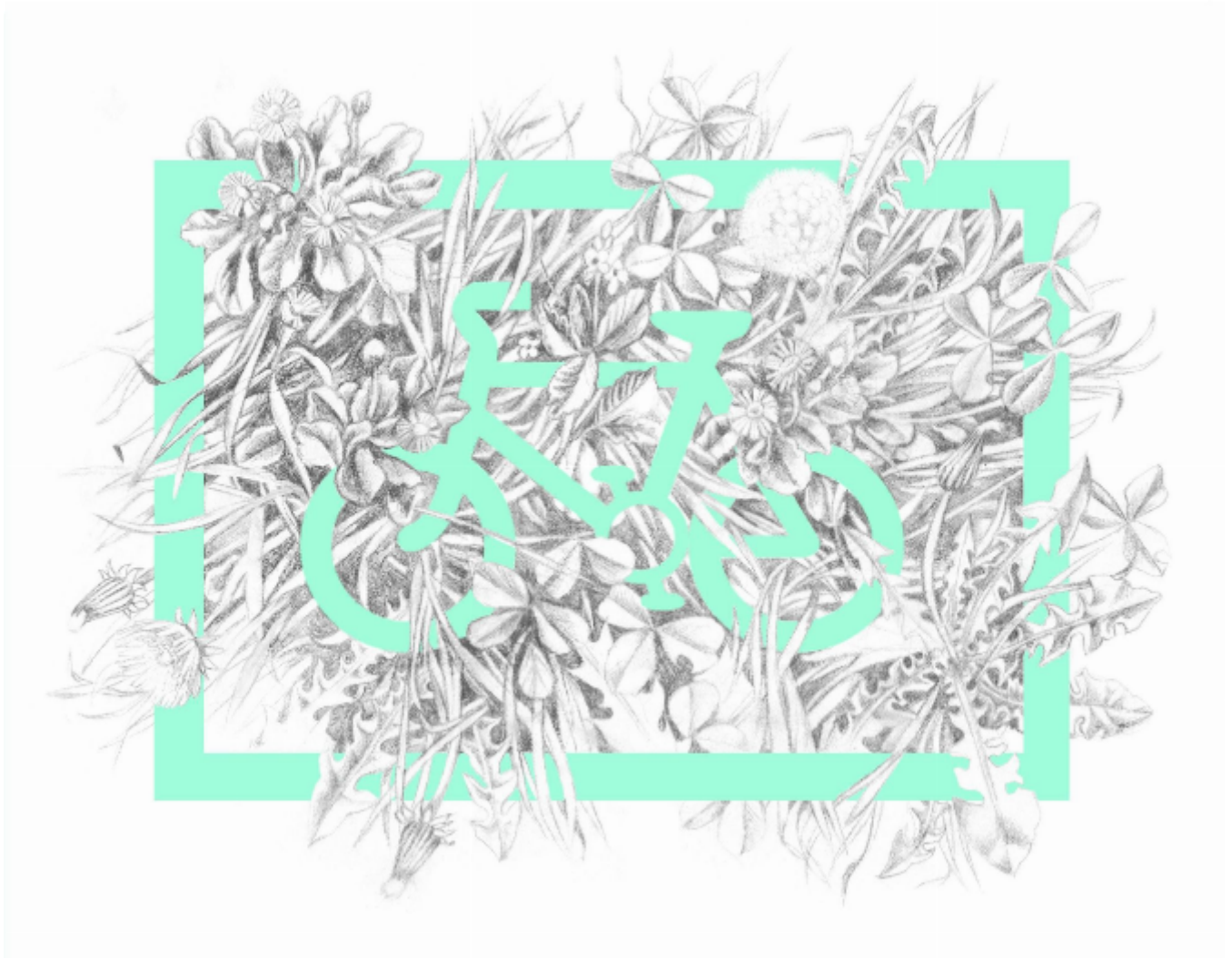


Cycle Lane (Turquoise-Green Edition) - Framed  
Nessie Ramm

£175



REF: 3820

Height: 45 cm (17.7")

Width: 54 cm (21.3")

## Description

Conservation Framed with AR70 Glass.

Cycle Lane (Dandelion, Buttercup & Clover Leaf)

Digital Print.

ED. /25

A cycle-lane sign from Lamberhurst in Kent, painted with some of the plants growing in the verge nearby. Though perhaps insignificant to us, road verges have become an important wild habitat. Managing them all for nature would create a huge connected network across the country and increase biodiversity. Are we prepared to change our priorities?

Signed by the Artist.