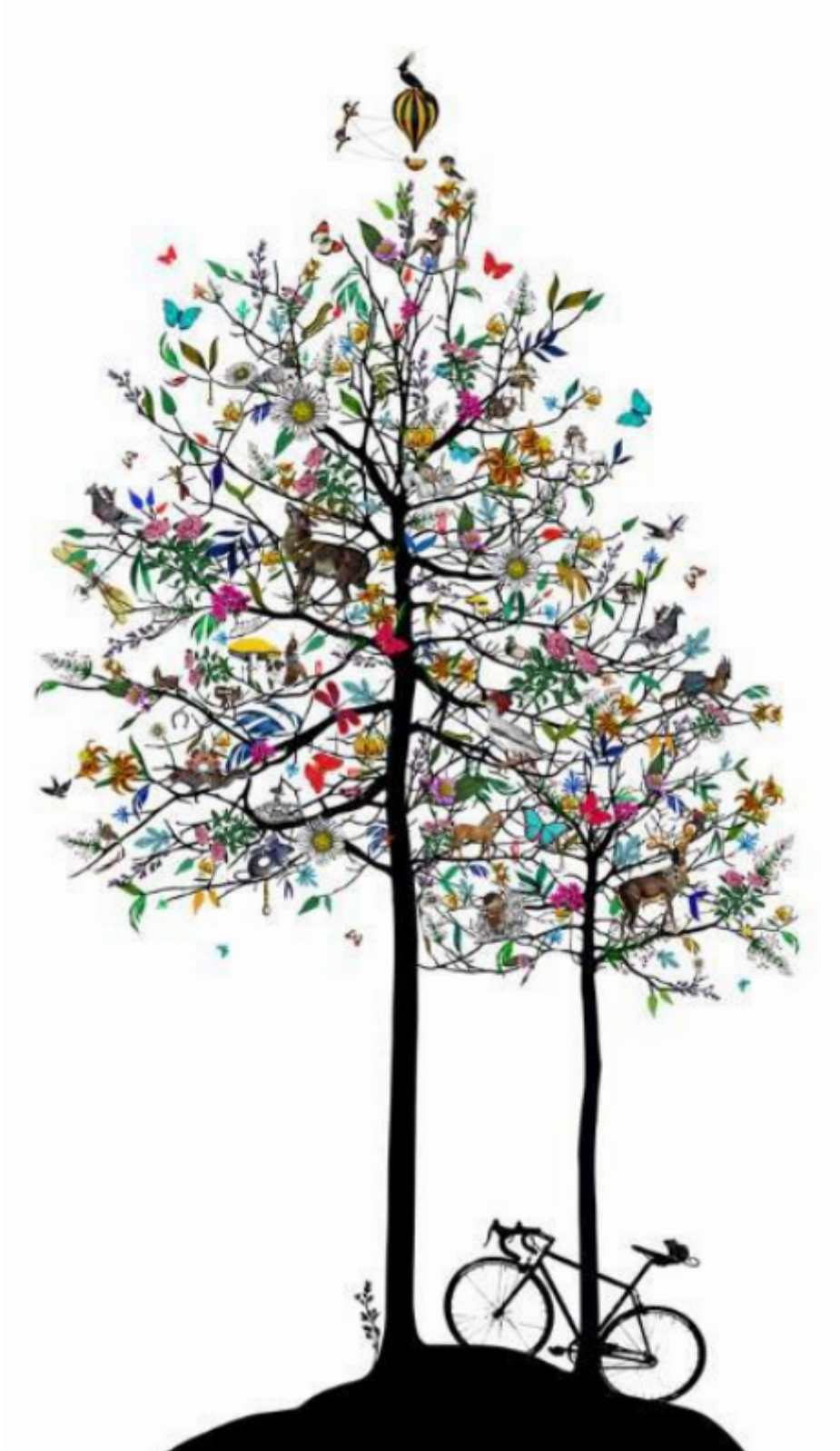


A Walk In The Park - Framed

Kristjana S Williams

Sold



REF: 2365

Height: 92 cm (36.2")

Width: 66 cm (26")

Description

Conservation Framed with AR70 Glass.

This brand new tree artwork offers a unique glimpse into Kristjana's London life, being inspired by the artist's seasonal walks through Gunnersbury Park, Richmond and the Sussex South Downs.

Captured in the lofty boughs of this vibrant tree is the essence of the British countryside. Discover the creatures of hedgerows, streams and ponds; meadows, hilltops and the hidden habitats beneath mossy logs. Miniature mammals carry diminutive forms over criss-crossing branches, met by inquisitive caterpillars and roosting birds. The stags and ponies of the park stand sentinel amidst deep green midsummer leaves, which tussle against the burnt orange of Autumn, representing the changing of the seasons. A tiny horseshoe represents a Gunnersbury pond; commanding azaleas, lilies and camelias, the formal gardens within the city parks, while smaller garden flowers delight with ethereal and gentle colour. Hidden within the flora, pops of scarlet red reveal iconic London buses and phone boxes, for the bustle of city life is never far from the inner city oases. A lone bicycle leans against the supporting trunk, left waiting by humankind as they explore the pastoral world above.

Giclée on Matt Smooth Fine Art Cotton 300 gsm.

ED. /225

Signed by the Artist.

'Own Art' Option Available - Contact the gallery for further information.